

How to...

Determine
panel dimensions
for b62 frames



beMatrix[®]
re!nventing stand building systems

How to...

Determine panel dimensions for b62 frames

For **straight frames**, We recommend 3 mm thick panels such as aluminium sandwich panels, forex, ...

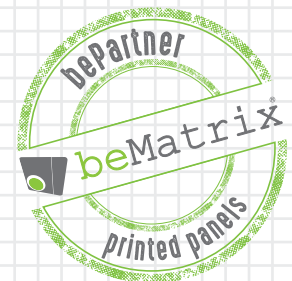
For **curved frames**, bear in mind that the chosen material must be suitable for bending in the desired radius. This is possible, for example, by choosing a thinner material.

For **perfect corners**, we advise to use 3 mm thick aluminium sandwich panels (dibond) with milled recess on the rear side for the fold.

bePartner • printed panels

We have selected worldwide partners for panel printing that can offer premium print quality and are very familiar with the beMatrix products. These so-called bePartner • printed panels will help you to achieve a perfect result.

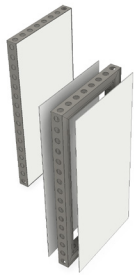
Find your bePartner on our website: www.beMatrix.com/us/en-us/support/find-bepartner.



How to...

Determine panel dimensions for b62 frames

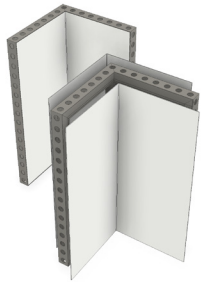
The following pages explain how you can calculate the correct dimensions of the panel infills for your beMatrix frame or door. As a general rule, always start from the frame size.



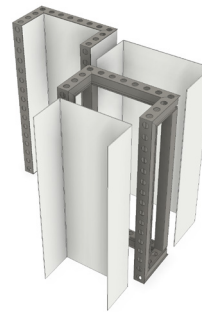
b62 straight frames



b62 curved frames



b62 perfect corner



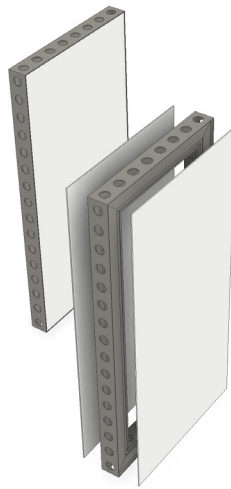
b62 perfect "U"



b62 pivot door

How to...

**Determine
panel dimensions
for b62 straight
frames**



Panel size = frame size – 7 mm

Example

Frame: 992 x 2480 mm

Panel: 985 x 2473 mm

How to...

Determine panel dimensions for b62 curved frames



OUT: 408,5 mm



IN: 317,5 mm

688 0248 ++++

b62 CURVED FRAME 90° [R0182] [H=++++MM]

Suggested infill size

Outside panel

Width: 408,5 mm

Height: height frame – 9 mm

Inside panel

Width: 317,5 mm

Height: height frame – 9 mm



OUT: 798 mm



IN: 707 mm

688 0496 ++++

b62 CURVED FRAME 90° [R0430] [H=++++MM]

Suggested infill size

Outside panel

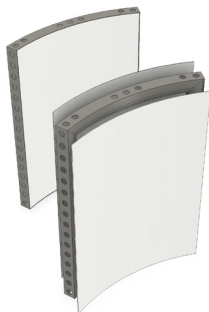
Width: 798 mm

Height: height frame – 7 mm

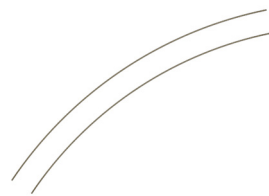
Inside panel

Width: 707 mm

Height: height frame – 7 mm



OUT: 771 mm



IN: 725 mm

688 0992 ++++ 45

b62 CURVED FRAME 45° [R0992] [H=++++MM]

Suggested infill size

Outside panel

Width: 771 mm

Height: height frame – 7 mm

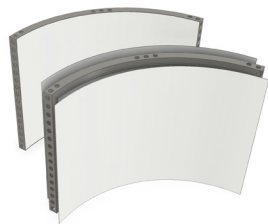
Inside panel

Width: 725 mm

Height: height frame – 7 mm

How to...

Determine panel dimensions for b62 curved frames



OUT: 1549 mm



IN: 1458 mm

688 0992 ++++ 90

b62 CURVED FRAME 90° [R0992] [H=++++MM]

Suggested infill size

Outside panel

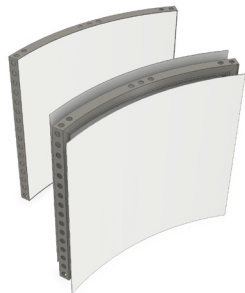
Width: 1549 mm

Height: height frame – 7 mm

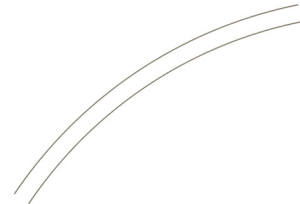
Inside panel

Width: 1458 mm

Height: height frame – 7 mm



OUT: 1161 mm



IN: 1116 mm

688 1488 ++++

b62 CURVED FRAME 45° [R1488] [H=++++MM]

Suggested infill size

Outside panel

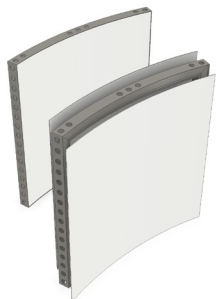
Width: 1161 mm

Height: height frame – 7 mm

Inside panel

Width: 1116 mm

Height: height frame – 7 mm



OUT: 1031,5 mm



IN: 1001 mm

688 1984 ++++

b62 CURVED FRAME 30° [R1984] [H=++++MM]

Suggested infill size

Outside panel

Width: 1031,5 mm

Height: height frame – 7 mm

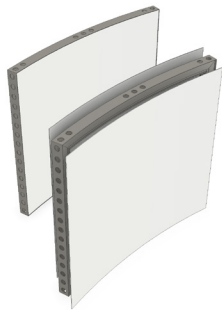
Inside panel

Width: 1001 mm

Height: height frame – 7 mm

How to...

Determine panel dimensions for b62 curved frames



OUT: 1162 mm



IN: 1139 mm

688 2976 ++++

b62 CURVED FRAME 22,5° [R2976] [H=++++MM]

Suggested infill size

Outside panel

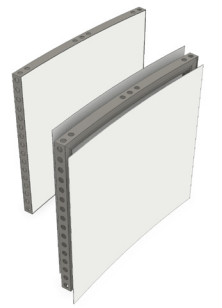
Width: 1162 mm

Height: height frame – 7 mm

Inside panel

Width: 1139 mm

Height: height frame – 7 mm



OUT: 1161 mm



IN: 1150 mm

688 5952 ++++

b62 CURVED FRAME 11,25° [R5952] [H=++++MM]

Suggested infill size

Outside panel

Width: 1161 mm

Height: height frame – 7 mm

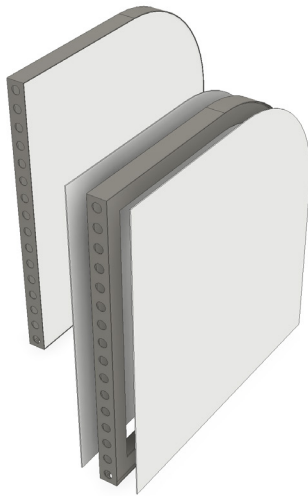
Inside panel

Width: 1150 mm

Height: height frame – 7 mm

How to...

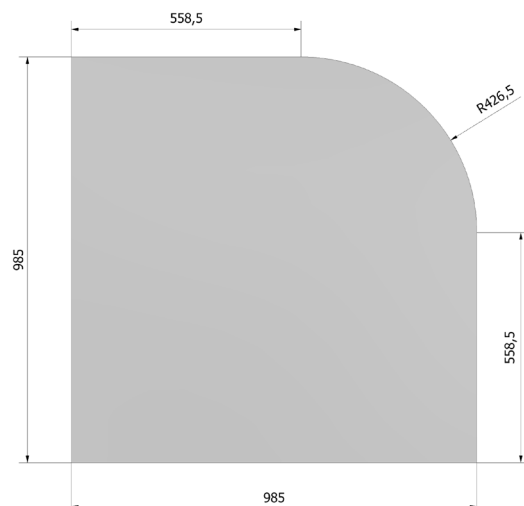
Determine
panel dimensions
for b62 frames
with curved
corner R430



688 0992 0992 R430

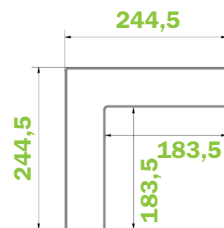
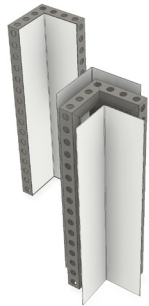
b62 FRAME [0992 X 0992MM] WITH CURVED CORNER R430

Suggested infill size: see drawing



How to...

Determine
panel dimensions
for b62 perfect
corners



690 0248 ++++

b62 PERFECT CORNER [0248 X 0248MM] [H=++++MM]

Suggested infill size

Outside panel

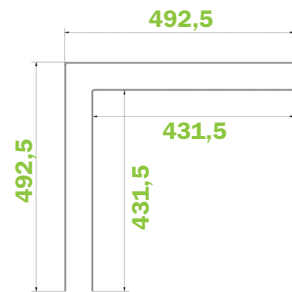
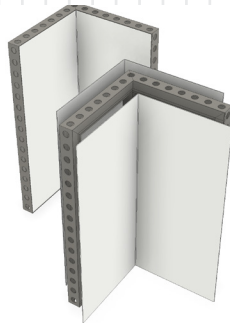
Width: 486,5 mm

Height: height frame – 7 mm

Inside panel

Width: 366 mm

Height: height frame – 7 mm



690 0496 ++++

b62 PERFECT CORNER [0496 X 0496MM] [H=++++MM]

Suggested infill size

Outside panel

Width: 982,5 mm

Height: height frame – 7 mm

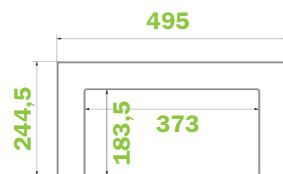
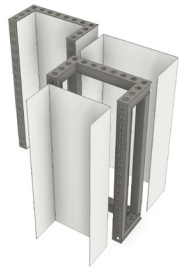
Inside panel

Width: 862 mm

Height: height frame – 7 mm

How to...

Determine panel dimensions for b62 perfect "U"



691 0248 ++++

b62 PERFECT U [0248 X 0496 X 0248MM] [H=++++MM]

Suggested infill size

Outside panel

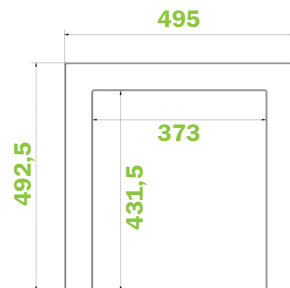
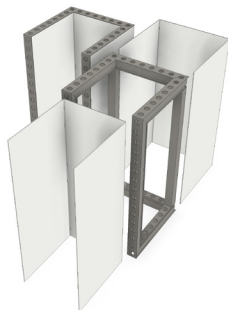
Width: 979 mm

Height: height frame – 7 mm

Inside panel

Width: 737,5 mm

Height: height frame – 7 mm



691 0496 ++++

b62 PERFECT U [0496 X 0496 X 0496MM] [H=++++MM]

Suggested infill size

Outside panel

Width: 1475 mm

Height: height frame – 7 mm

Inside panel

Width: 1233,5 mm

Height: height frame – 7 mm

How to...

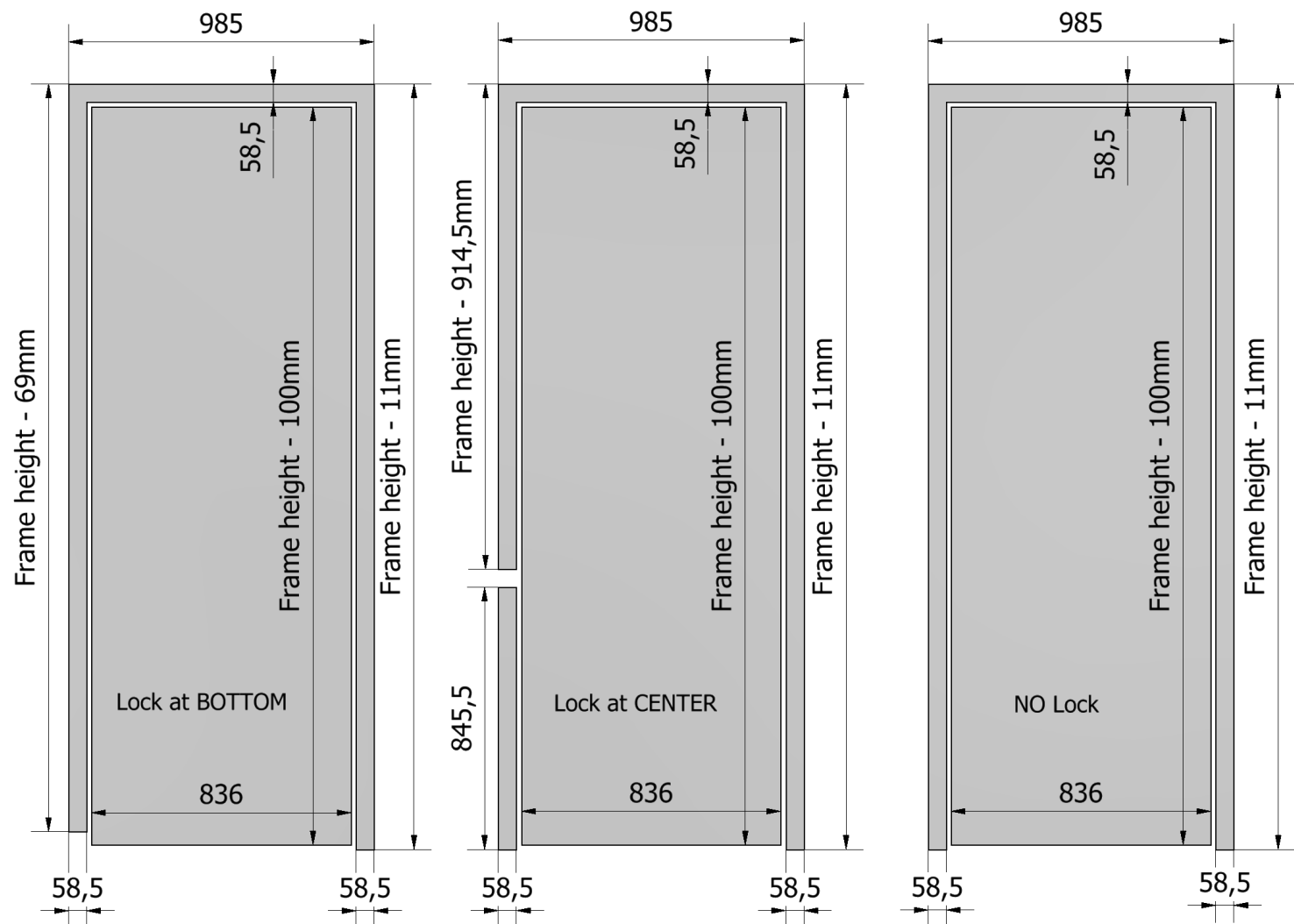
Determine panel dimensions for b62 pivot door



620 0992 ++++

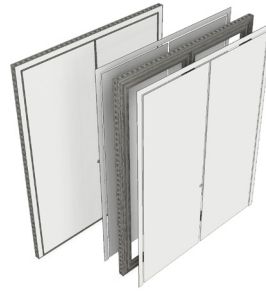
b62 PIVOT DOOR MKII [0992 X ++++MM]

For panel infills for the pivot door, please take the dimensions below into account. The .DXF file of the panel dimensions can be found [here](#).



How to...

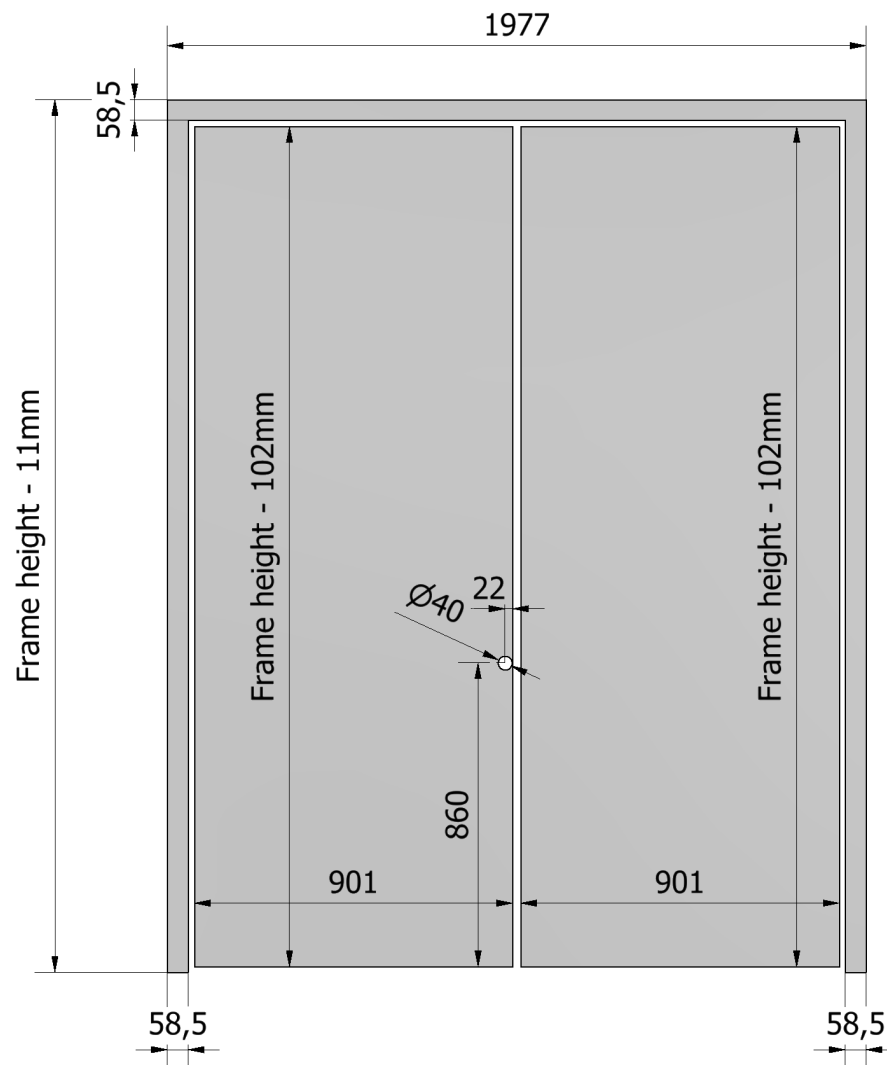
Determine panel dimensions for b62 pivot double door



623 1984 +++++

b62 PIVOT DOUBLE DOOR MKII [1984 X +++++MM]

For panel infills for the pivot door, please take the dimensions below into account. The .DXF file of the panel dimensions can be found [here](#).



beMatrix®

beMatrix head-office USA

4476 Park Drive

Norcross, Georgia 30093

T. + 770 225 0552

www.beMatrix.com