

be anywhere.

UnderCovr



UnderCovr, we got you covered!
be anything

1 / Structure

- Advantages
- The body
- The roof
- The skin

2 / Parts

- Level and stabilize on hard surface
- Stabilization by anchoring

3 / Standard packs

beMatrix goes sustainable
8 beMatrix principles

3	
4	
	6
8	
9	
10	
11	
	12
14	
16	
	18
22	
24	



UnderCovr, we got you covered!

The world of live communication continues to evolve. With this new concept you can take your beMatrix stock **beyond the show floor and go outdoors**. With the addition of just a few new parts, you open up a world of new opportunities. Use your existing beMatrix inventory and take the convenience of our system outdoors.

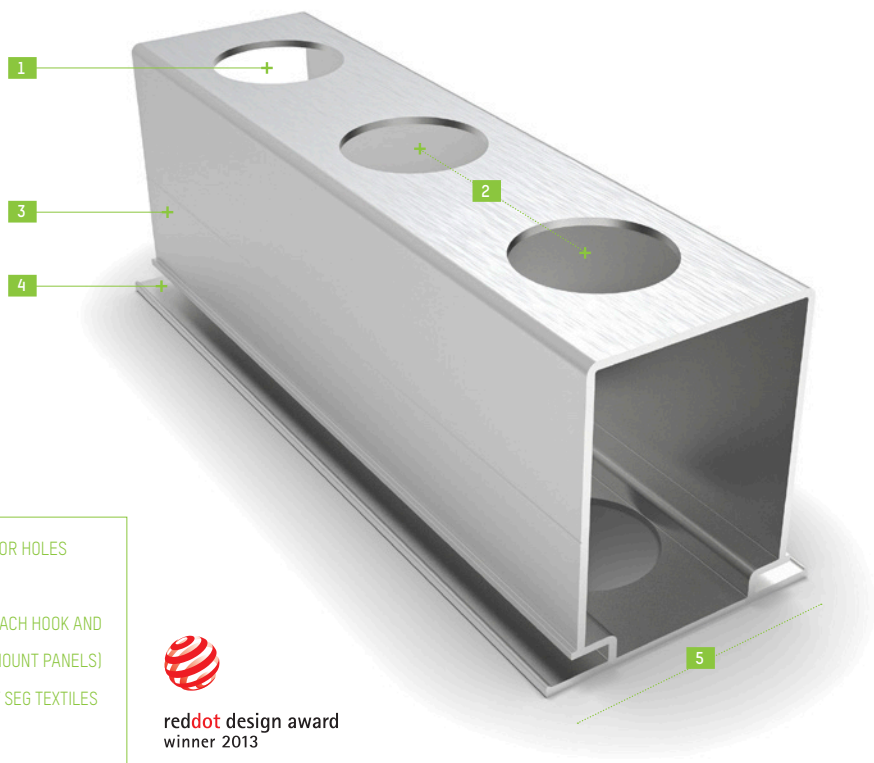
Outdoor events are nothing new, but with this new concept you can take the ease of use the beMatrix system is known for, anywhere.



be anything

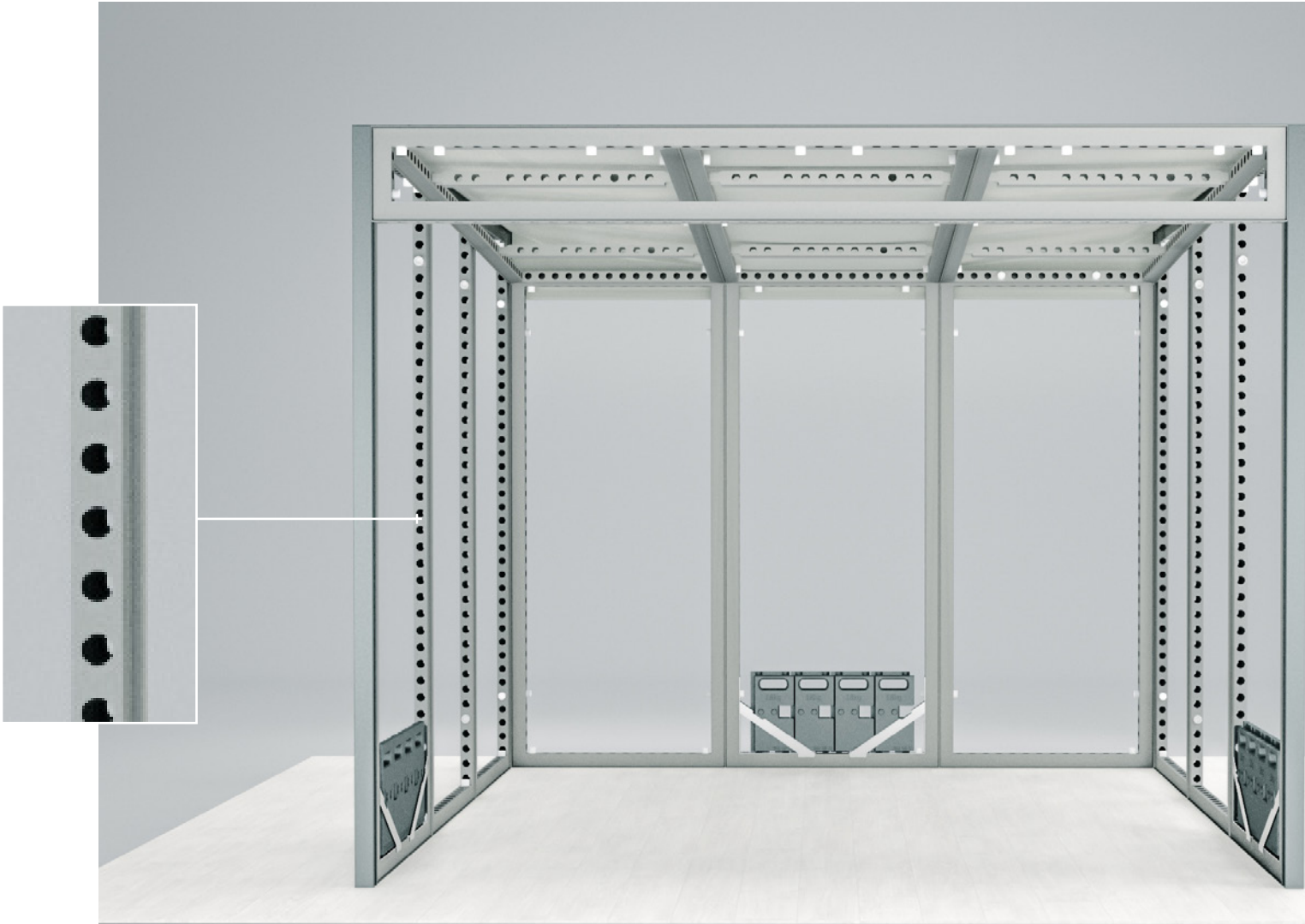
The beMatrix frame system: endless options for exhibit and event builders

Assembling the beMatrix frame system is so much faster than assembling a traditional profile-based system. What's more, it's lightweight and can be assembled without tools. Thanks to the big holes, the frames can be easily connected to each other, in all directions. The 62 mm matrix delivers the ultimate in modularity, with countless configuration options. Panels, SEG textiles or light walls, are fixed directly onto the frames rendering the frame nearly invisible. The result is an attractive and minimalist look allowing for maximum amplitude in visual communication.



Modularity and customization in one

The beMatrix system offers a plethora of creative finishing options. It also combines all the benefits of a modular system with the possibilities of a made-to-measure solution. Almost any kind of shape and construction is conceivable and can easily be created. In short: one single frame system allows you to create a multitude of concepts.



UnderCovr is entirely built out of beMatrix frames. Designed and reinforced to withstand weather conditions like wind and rain. How you finish the UnderCovr is up to you. Use both textile or panels on either side of the frame depending on your needs!



UnderCovr 1/structure

Structure

Advantages

One integrated solution

With UnderCovr you no longer need to setup tent structures to cover your beMatrix frames. This type of work-around is now a thing of the past. UnderCovr is a **single structure** that offers sufficient strength and outdoor durability on its own.

Build fast

Just like with our other products, assembling with UnderCover is lightweight and fast. Thanks to the big holes, the frames can easily be connected to each other without needing any tools.



beMatrix DNA

The core of beMatrix is innovation and modularity, and UnderCovr is no different. UnderCovr can be combined with all other beMatrix products both inside and outside, giving designers true design freedom.

Get creative

You choose how the UnderCovr will look. As with all our products, you can finish UnderCovr with **3 mm panels** or **SEG textile** that fit the standard b62 frames.



The body

The walls of the module are built with standard beMatrix frames and connectors. You can reuse your current beMatrix inventory or get your UnderCovr standard pack.

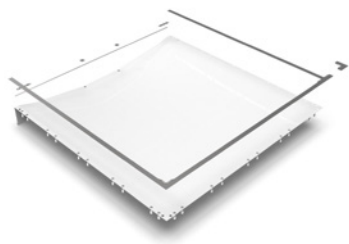



	MODULE 3 X 3	MODULE 6 X 3
	6 standard frames 992 x 2480 mm ECO+ finish Double hook Velcro	6 standard frames 992 x 2480 mm ECO+ finish Double hook Velcro
	3 specific frames 992 x 2294 mm ECO+ finish Double hook Velcro	6 specific frames 992 x 2294 mm ECO+ finish Double hook Velcro
	1 reinforced top frame, D30 holes 310 x 2976 mm ECO+ finish Double hook Velcro	3 reinforced top frames, D30 holes 310 x 2976 mm ECO+ finish Double hook Velcro

GOOD TO KNOW

The ECO+ finish of the frames is a brushing technique, which does not damage the environment and results in ECO frames that look almost identical to anodized frames.



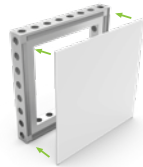



The roof

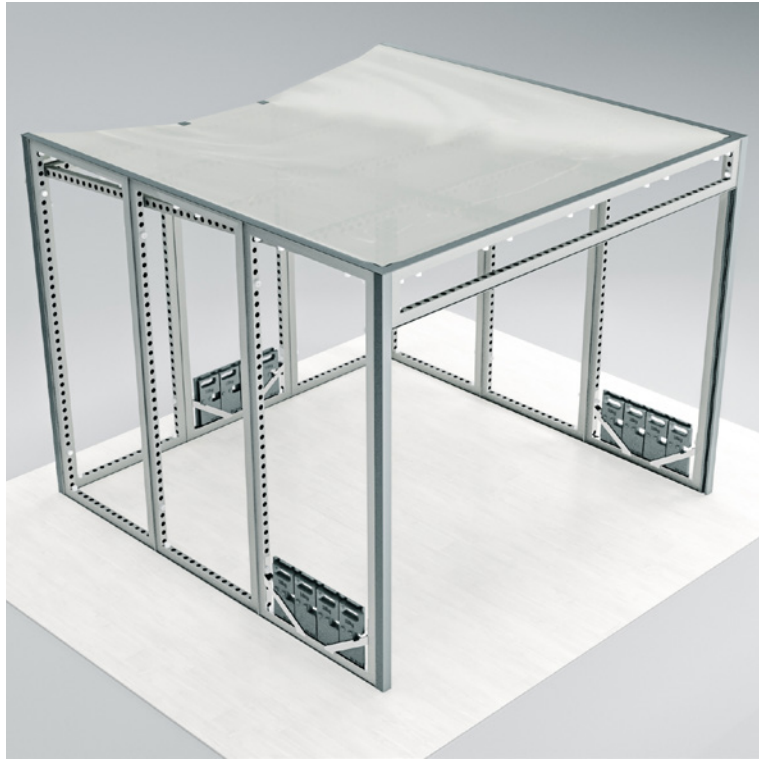
460 000 01 ROOF SET		
	<p>The roof can be purchased in a set and contains all the elements you need to complete the build of the UnderCovr module. The ceiling inside is constructed out of standard frames and mounted with standard connectors (ECO+ finish & Double hook Velcro)</p> <p>3 X 3: 3 standard frames 992 x 2976 - 6 X 3: 6 standard frames 992 x 2976</p> <p>The roof set is mounted on top of the frames at an angle so that water flows to the backside of the construction.</p> <p>The set consists of:</p>	
	<p>Fixation plates to mount the roof cover to the structure with M8 screws. The items are galvanized and painted gray for a nice looking finish.</p>	<p>460 03 00 460 03 01 460 03 02 460 03 03 460 03 04</p>
	<p>Roof UnderCovr canvas to shield the inner surface from the rain. The canvas has prepared holes for ease of use.</p>	<p>460 02 00 3100 x 3100 mm RAL 9016</p>
	<p>Roof UnderCovr stabilizer to put tension on the canvas. The rod will make sure the canvas stays put under windy circumstances.</p>	<p>802 2976 D00 Galva D17,2 / 12,5 2976 mm</p>



The skin

You can finish the structure by using both printed panels or printed SEG textiles to fit your outdoor event concept. UnderCovr is 100% customizable.

PANELS	SEG TEXTILES	ALTERNATIVE INFILLS
		
<p>Panels in PVC, dibond, wood, (acrylic) glass... it's all up to you. Mount panels on both sides of the frame for maximum robustness.</p> <p>Use beMatrix loop & hook Velcro® to make sure your panels can withstand the outdoor elements.</p>	<p>Use SEG textiles if you are looking for a seamless finish and the most sustainable solution.</p> <p>For outdoor use, the textile fixation clip (460 05 01) is used to mount and keep the SEG textile in place. With this extra piece, the tendon of the SEG is clamped for extra fixation.</p> 	<p>Almost any other kind of material (thicker than 3mm) can be mounted onto the beMatrix frame system.</p> <p>Be as creative as you like: (fake) moss, wood, Alcantara tiles, rope, plexi... Whatever you can think of!</p>



UnderCovr

2 / Parts

Parts

Level and stabilize on hard surface

UnderCovr's parts let you take your current beMatrix inventory outdoors. You can build covered surfaces of 3 x 3, or 6 x 3 and place as many modules next to each other as you need. No matter what surface you place the modules on, we've got you covered. You can stabilize the UnderCovr on hard surfaces using the frame counter weight, or anchor the module in the ground.

FRAME COUNTERWEIGHT 901 60 01

A 18 kg galvanized steel counterweight to strengthen all types of beMatrix indoor and outdoor constructions. The part is designed to perfectly fit the b62 grid and is easily stackable. In combination with the frame reinforcement bracket, the counterweights are kept in place in a completely invisible way. Add up to 4 weights inside a 992mm wide frame. Can also be used to counterweight a LEDskin® wall by adding it to a 90° return frame. For indoor and outdoor use.

[Watch the instructional video here.](#)

ROOF UNDERCOVR CANVAS 460 02 00

FIXATION PLATE 460 03 00 460 03 01 460 03 02 460 03 03 460 03 04

b62 REINFORCED FRAME 460 0310 2976 30

b62 FRAME 606 +++++ 30

ADJUSTABLE FOOT XL M8 901 39 01

Level your UnderCovr structure by mounting the adjustable XL foot with M8 thread in a pin under the frame or in combination with the **SQUARE 62 BASE PLATE CONNECTOR**. 901 34 615 D30 GALVA.

FRAME REINFORCEMENT BRACKET 901 60 02

When adding the frame reinforcement bracket, you add extra strength to the frame. The bracket will prevent torsion at the bottom or the weakest point of the frame when adding one or more frame counterweights. On top, the bracket keeps the counterweights in place in an invisible way. Mounted with M8 pin connector or toolless connector. For indoor and outdoor use.

[Watch the instructional video here.](#)

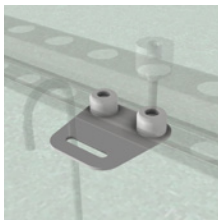
Stabilization by anchoring



GROUND ANCHOR

460 04 00

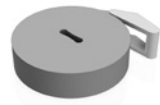
Fix the construction to the ground with an anchor for more stability, preferably to be used in combination with the base plate 460 06 00.



GROUND ANCHOR PLATE

460 06 00

Don't damage your frames by using the ground anchor plate. This base plate is used to fix the construction to the ground by means of ground anchor 460 04 00.



STRAP (7,5 X 25 MM) GREY

990 60 24 14

GOOD TO KNOW

The UnderCovr module complies with the EN 13782 standard.

- The certified module contains a setup using the combination of hard surface stabilization and anchoring.
- The structure can withstand windspeed of max 80 km/h
- The roof surface can carry a snow load less than 8cm
- The structure can have a maximum width of 10m and a surface less than 50m²
- To comply with the standard, a reinforced top frame is needed.

If the event or customer does not require compliance with this maximum windspeed, you can delete some items such as straps or reinforcement.





UnderCovr

3/Packs

Standard packs

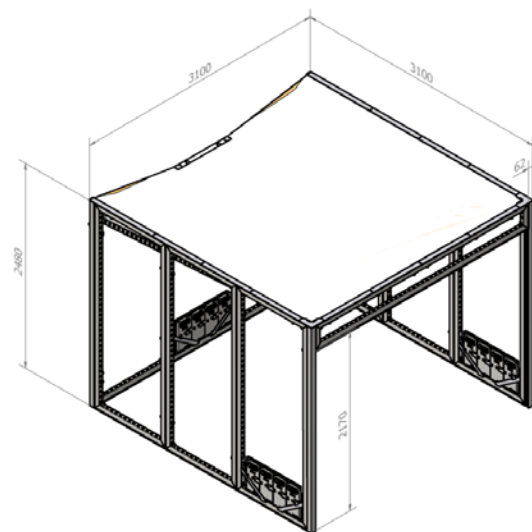
We bundled the UnderCovr elements and features into **2 standard UnderCovr Packs**.

Each pack offers you:

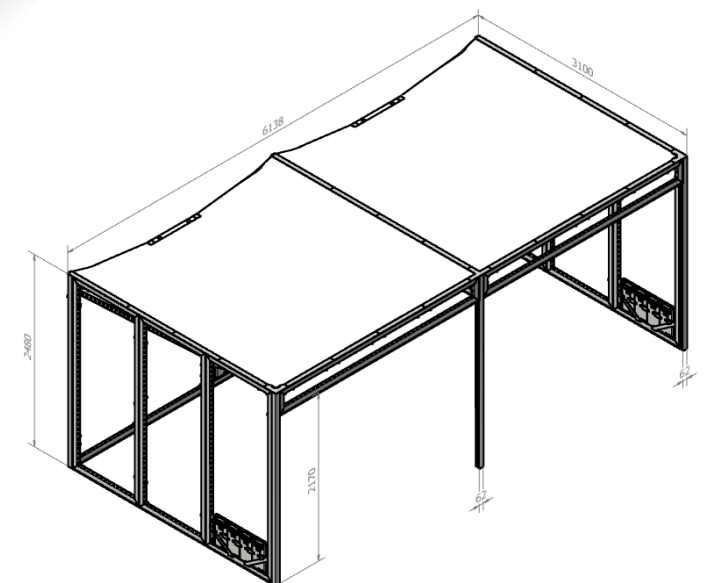
- Complete UnderCovr set-up **including frames, parts and canvas**. Excluding panels.
- Fast set-up and dismantling
- Light and user-friendly
- Standard eco-finish profiles
- Certified construction according to EN 13782



460 001 TG
3 x 3
3100 x 3100 x 2480 mm



460 000 TG
6 x 3
6138 x 3100 x 2480 mm



beMatrix goes sustainable

At beMatrix, sustainability is one of our main focuses. Be it when making strategic decisions or while running everyday operations, we always remain mindful of our ecological, economic and social impact. beMatrix took the first big step towards sustainability when launching the aluminum frame system with big holes in 1993. The typical features of this system are in full compliance with the 3 P's (People, Planet, Profit).

Lightweight

One standard 922 x 2480 mm aluminum frame weighs **6,955 kg**. This low weight is one of the reasons why our frames are so user-friendly. Another perk: the exhibit and event builder requires less personnel for assembly. Since the weight is kept low there are huge economic and environmental benefits.

Long life cycle

Our frames can be **re-used**, in all kinds of configurations. This long-life cycle lowers our demand for raw materials and energy since fewer new frames need to be manufactured.

Low carbon footprint

At the start of 2018, beMatrix asked an external organization to compare the level of CO2 emissions of the beMatrix frame system and wooden constructions (calculated using the Bilan Carbone® method), including production, transport, deployment and end-of-life phase. This study demonstrated that emissions when using a wooden construction are in fact almost twice the level of those of the aluminum frame system with a Forex infill. When only taking into account the aluminum frames without the infill, it is very clear that **the footprint of aluminum frames is significantly smaller** than when wooden frames are used.

Download the sustainability report on www.beMatrix.com/en/downloads/

Modular

The beMatrix frame system allows for a **360° configuration**: the frames can be used for **floors, ceilings and walls**. Moreover, one group of frames can be used in different kinds of set-ups, so the stand or event builder has no need to acquire new frames. Even today, a large number of booths are still constructed of wood, most of which end up in a trash container at the end of the event. That amount of waste is staggering. The beMatrix frame system actually slows this waste from accruing.



8 beMatrix principles



Quality guaranteed

All beMatrix frames are manufactured in-house, so we are in control of every step in the production process. Continuous optimization and innovation initiatives ensure the system always complies with the market’s demands.



Freedom to design

A beMatrix project combines the benefits of a modular system with the possibilities of made-to-measure solutions. Almost any shape, contour and construction is conceivable and can easily be created. One single frame allows you to create all different kinds of concepts.



Top finishing

The beMatrix system comes with a large range of tools and accessories to finish your project exactly as you envisioned. With the infills, the ‘skin’, you can even hide the entire frame system so it becomes invisible to the eye. Thanks to our ‘seamless’ concept, not one seam will be noticeable.



Lightweight

The aluminum frame system is lightweight, ergonomic and eco-friendly: no need for the exhibit or event builder to carry around heavy structures, while the transport weight and CO₂ emissions remain low.



Fast

Assembly and disassembly of the beMatrix system takes hardly any time. Its weight, simplicity and tool-free assembly save loads of time, leaving you space to focus on the finishing details of your project.



Long life cycle

The system is extremely sturdy, making it endlessly reusable. Wear and tear won't shorten its life cycle, since the frame is not visible to the eye once the project is set up.



Ecologically sound

Because of its low weight, long life cycle and modular character, the beMatrix frame system is the most eco-friendly system today.



International network

beMatrix has 3 production sites worldwide and several service hubs across the world, so we offer support close by, wherever you are.



beMatrix head-office USA
4476 Park Drive
Norcross, GA 30093
T. +770 225 0552
info@beMatrix.us
www.beMatrix.us

Follow us: [f](#) [t](#) [in](#) [@](#) [v](#)